

# Harvington Neighbourhood Plan

The community opportunity

Chris Haynes  
11 April 2015

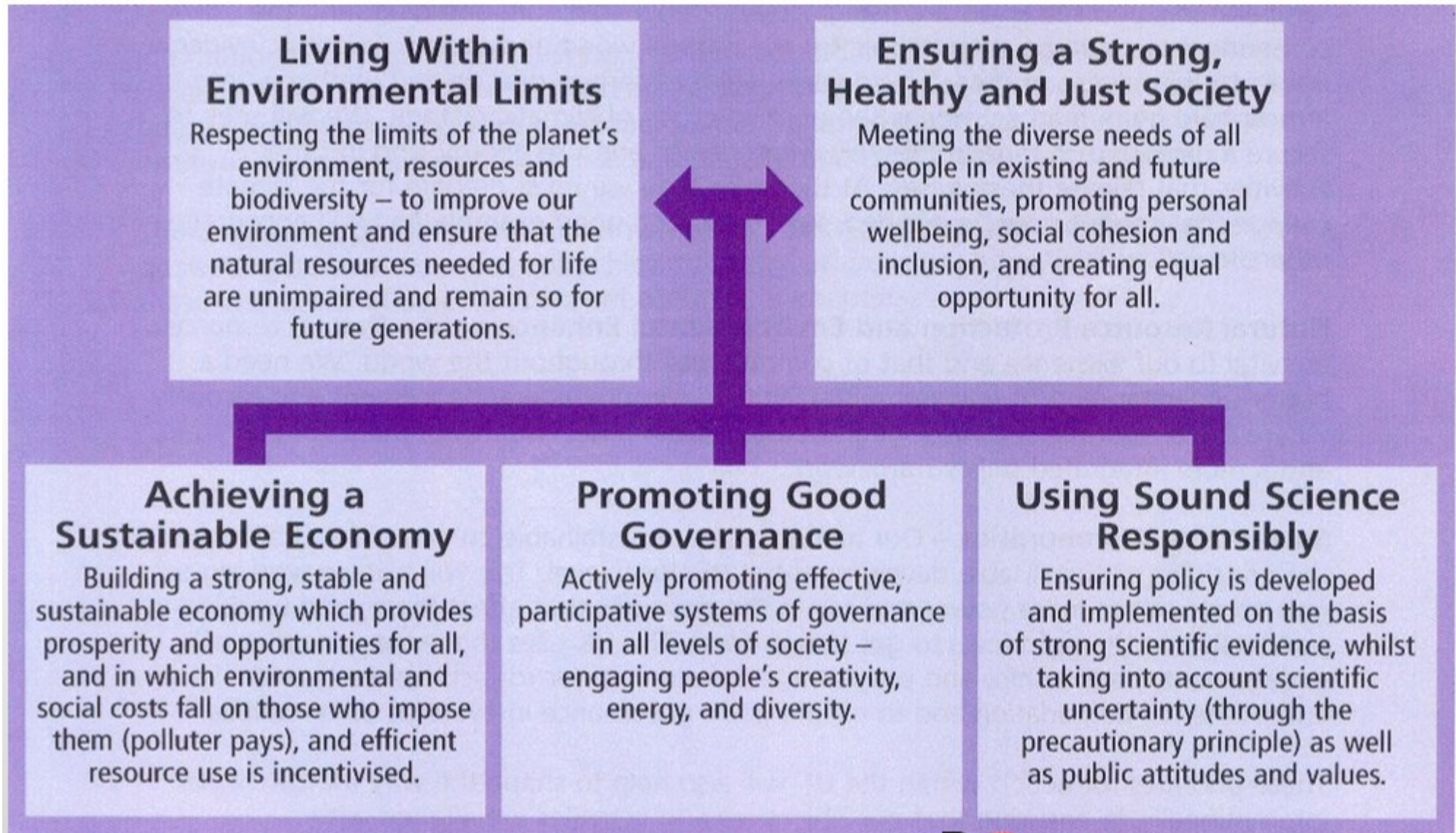
# Today's agenda

- Why
- What
- How
- When
- Who

# Why?

- Localism Act 2011
- Part of the legal planning framework
  - Developments *required* to conform
- Not a means of *stopping* development
  - *Must include needs from SWDP*
- Opportunity to protect village character & features
- Opportunity to define *for ourselves* the need for housing, community assets, green spaces, etc.
- **15 year vision**

# UK Sustainable Development Strategy



# Sustainable Development

## Three roles:

- Environmental
- Social
- Economic

# The Environmental Role

- Improve biodiversity
- Protect heritage
- Use of natural resources prudently
- Minimise waste and pollution
- Mitigate and adapt to climate change
- Moving to a low carbon economy

# The Social Role

- Supply of housing for present and future generations
- High quality built environment
- Accessible local services to meet community's needs
- Support health, social and cultural well-being

# The Economic Role

- Make sufficient land available:
  - Of the right type
  - In the right place
  - At the right time
- Support innovation
- Provision of infrastructure
- Co-ordination with other development

# Typical contents

- Housing development and restoration
- Support for business set-up and growth
- Transport and access
- Community buildings
- Restrictions on building types & changes of use
- Building design
- Protection of public open spaces
- Protection of important buildings and historic assets
- Promotion of renewable energy projects

# Cans and Can'ts

## The plan CAN'T:

- Conflict with strategic policies in the South Worcestershire Development Plan (SWDP)
- Prevent development included in the SWDP

## The plan CAN:

- Decide where and what type of development should happen
- Promote more development than in the SWDP
- Include policies (e.g. design standards) which add to those in the SWDP

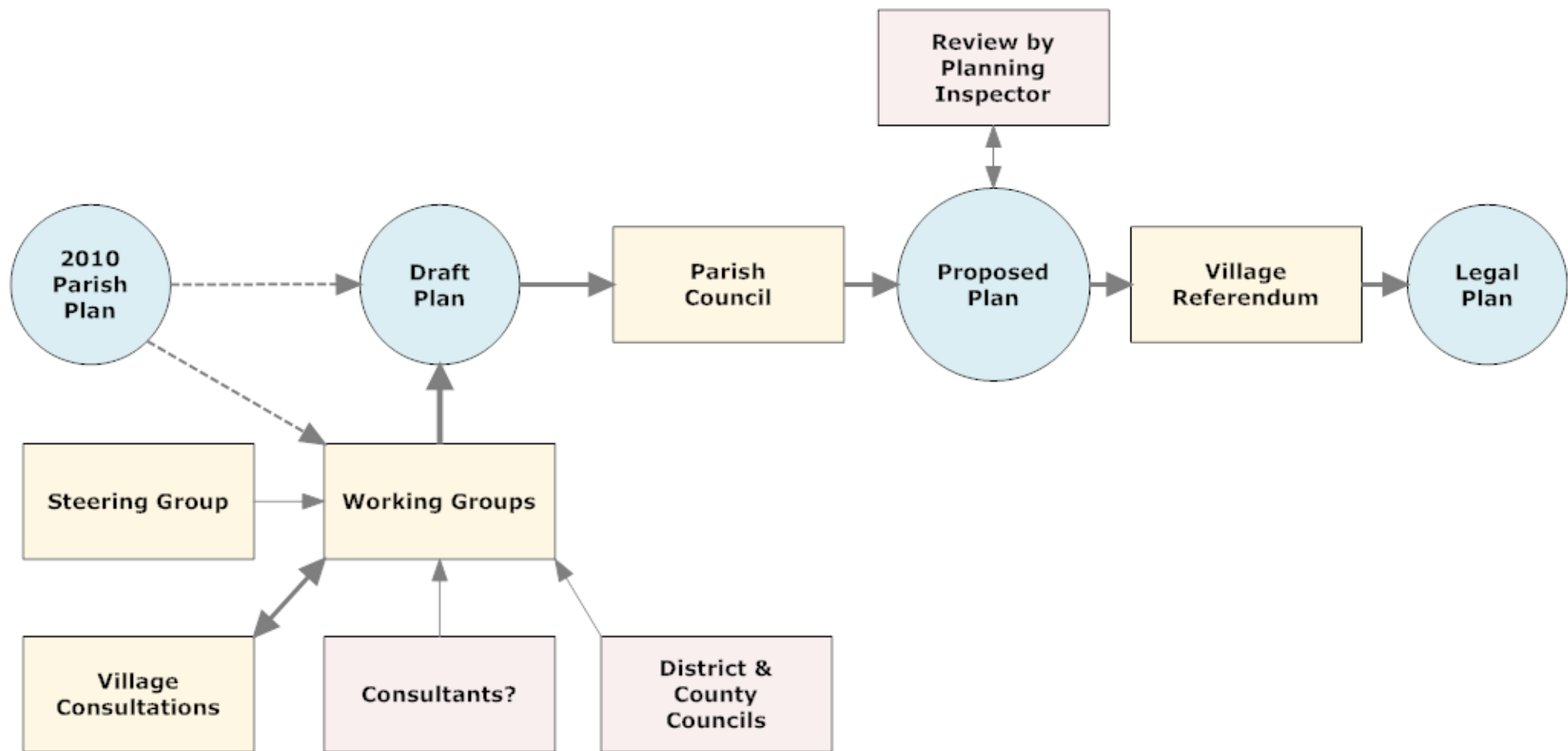
# What we can do

- Define scale, type, mix and location of developments
- **Protect** land using **Local Green Space Orders** (open spaces, tree avenues, foot, mobility scooter & cycle paths, wildlife corridors, play areas, etc. etc.)
- Define planning policies (rules to be obeyed)
- Designate specific sites for specific purposes
- Designate **Community Assets** - opportunity to buy

## *Later:*

- Issue **Neighbourhood Development Orders**: *Grant our own planning permission (after further village referendum)*

# Harvington Neighbourhood Plan - a community process

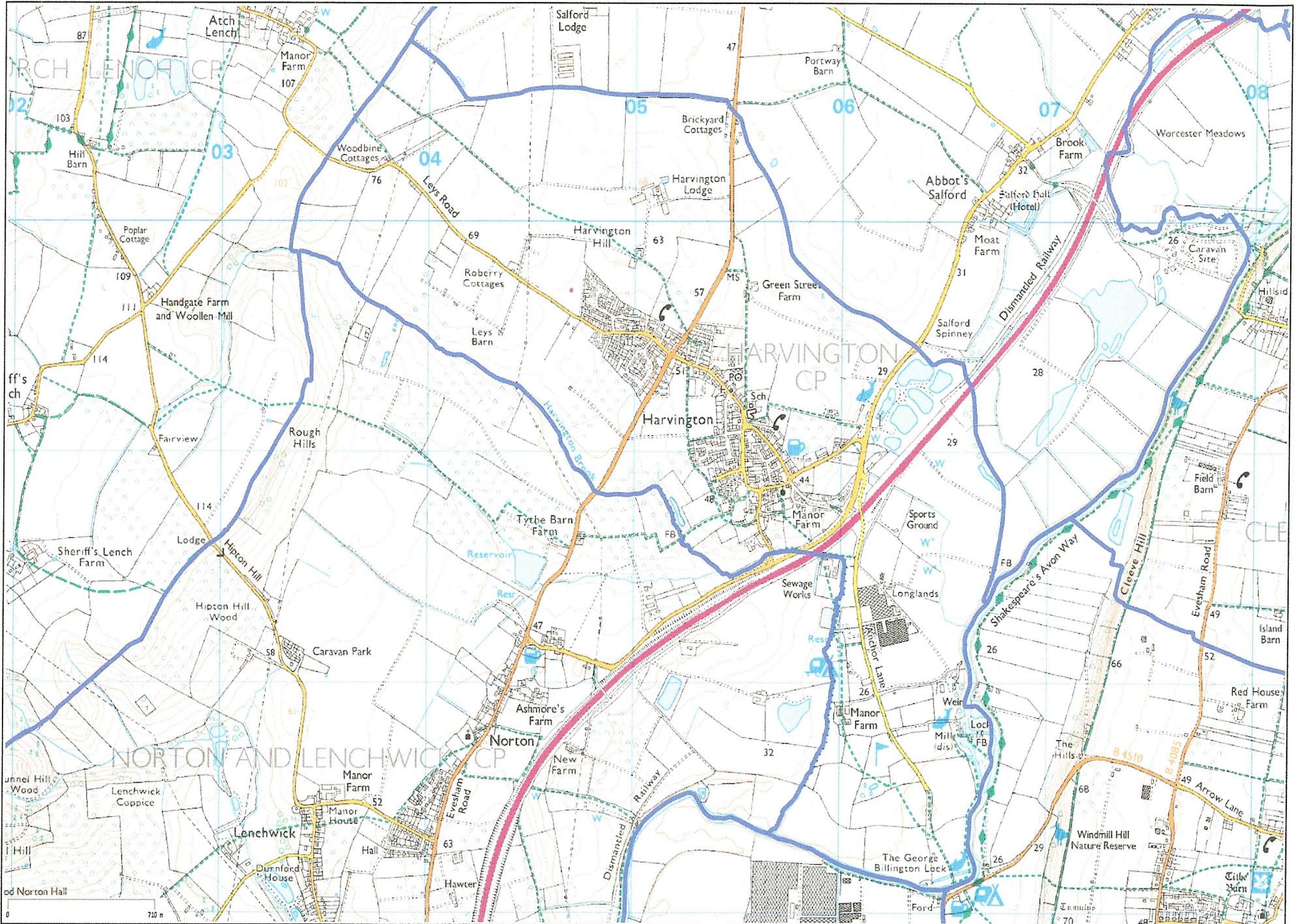


# Specialist advice

- Strategic Environmental Assessment
  - Must work with Wychavon to see if we need to do one
- Historic Landscape Assessment – Clive Allen
- Environmental assessments (various available)
- Wychavon to provide access to Mapping system
- Much other advice from Wychavon and County
- *Lots* of fee-charging consultants!

# Who to consult?

- Residents
- Community Organisations
- Housing associations
- Care home operators
- Businesses
- Land owners
- Developers
- ... *(Anyone else with an interest)*
- **Must collect & record evidence**



# Village Communications

- Internet as the main communication / consultation medium
- Identify those unable to use the internet
  - Buddy system: Trusted neighbour to pass messages & enter views
- Web site : [harvingtonplan.uk](http://harvingtonplan.uk)
- Email: [info@harvingtonplan.uk](mailto:info@harvingtonplan.uk)
- On-line database available soon
- Regular updates to Village News

# Steering Group

- Chris Haynes: Chairman (appointed by PC)
- Andy Tooth: Treasurer
- Two Parish Councillors – nominated by PC
- Representative of each working group
- 2 -3 others

# Working Groups

- Break down the work into smaller chunks
- Let people contribute in an area of interest to them
- Groups meet as and when they want
- First meeting in next 4 weeks, please
- Come up with a vision and decide what questions to ask the village
- Then everyone together again here on Saturday 9<sup>th</sup> May 10:00 – 12:00
- Group objectives & consultation plans confirmed
- Groups and their members will be fine-tuned
- Identify training needs

# Possible Groups

- Housing
- Social & community
- Environment & leisure
- Business, agriculture, horticulture, tourism
- Highways & transport
- Local facilities

## Next Steps

- Form initial working groups
- Round out steering group
- Identify opportunities and issues
- Need a Sustainability Appraisal?
  - *Advice from Wychavon DC*
- Produce work plan: 18 months?
- Start to compose a vision and objectives:

**Harvington – 2015 to 2030**